

Request A Catalog

15", 17", 20" and 22" - '83s and '84s
30 Spoke Elbow Wire Wheels

About Texan Wire Wheels

Home of the '83s and '84s 30 Spoke Wire Wheels
California and Texas Distribution Centers

Business Name:

Contact Name:

Address:

City:

State:

Zip:

Phone:

Fax:

Email:

Mail Request Form to:

Texan Wire Wheels LLC
311 N. Robertson Blvd.
Suite 809
Beverly Hills, CA 90211

Buy or Layaway Swangas online at:
www.TexanWireWheels.com

1.877.84.SWANG

Mission Statement

Customer relationships and building relationships is the key to our success while providing superior products to our end-users.

Company Info

Family owned and operated, Texan Wire Wheels is "the" manufacturer of the '83 and '84 30 Spoke Wire Wheels. With distribution centers in California and Texas, we are not only able to serve customers coast to coast, but also globally.



TWW 30 Spoke Elbows

Texan Wire Wheels 30 Spoke Elbows are made of solid steel, thus more durable than the original. The original '83 and '84 wheels are made of pewter which is traditionally between 85% and 99% tin...a much softer, less durable and easily breakable material. If left untreated, pewter will oxidize to a dull gray over time. In essence, our product is a modified version of the original by changing the hub design and making the '83 and '84 a durable and stable product. In effect, with an original on one side of a car and Texan Wire Wheels on the other side of the car, there would be no visible difference between the two.



TEXAN WIRE WHEELS LLC
311 N. ROBERTSON BLVD., SUITE 809
BEVERLY HILLS, CALIFORNIA 90211



TEXAN WIRE WHEELS

Vintage '83 and '84
**30 SPOKE ELBOWS
& ACCESSORIES**

**IF YOU AIN'T POKIN'
YOU MUST BE JOKIN'**



FEATURING

**30 SPOKE STEEL WHEELS • 15" 17" 20" 22"
GOLD OPTIONS • WHEEL ACCESSORIES**

Are you rolling on Swangas?

1.877.84.SWANG



15" 30 Spoke Wire Wheels

Fits Bolt Patterns: 5on4.5, 5.5, 5on4.75
Lug Nut: 5 Lug Unilug



15" '83 STANDARD
Product #: 83-15
Size: 15" x 7"



15" '84 STANDARD
Product #: 84-15
Size: 15" x 7"



17" '83 STANDARD
Product #: 83-17
Size: 17" x 7"



17" '84 STANDARD
Product #: 84-17
Size: 17" x 7"



20" '84 STANDARD
Product #: 84-20
Size: 20" x 8"



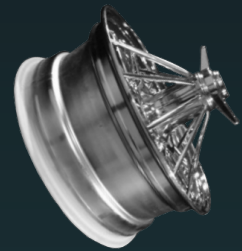
20" '84 SUPER POKE
Product #: 84-20
Size: 20" x 8"



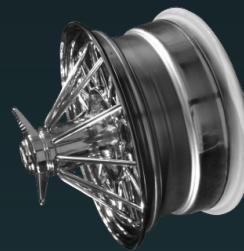
15" '83 SUPER POKE
Product #: 83-15sp
Size: 15" x 7"



15" '84 SUPER POKE
Product #: 84-15sp
Size: 15" x 7"



17" '83 SUPER POKE
Product #: 83-17sp
Size: 17" x 7"



17" '84 SUPER POKE
Product #: 84-17sp
Size: 17" x 7"



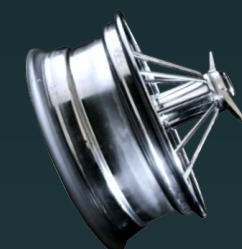
20" '84 SUPER POKE GOLD
Product #: 84-20sp
Size: 20" x 8"



15" '83 EXTREME POKE
Product #: 83-15ext
Size: 15" x 7"



15" '84 EXTREME POKE
Product #: 84-15ext
Size: 15" x 7"



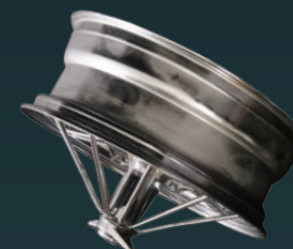
17" '83 EXTREME POKE
Product #: 83-17ext
Size: 17" x 7"



17" '84 EXTREME POKE
Product #: 84-17ext
Size: 17" x 7"



22" '84 STANDARD
Product #: 84-20
Size: 20" x 8"



22" '84 SUPER POKE
Product #: 84-20sp
Size: 20" x 8"



15" '84 SUPER POKE GOLD
Product #: 84-15spg
Size: 15" x 7"



17" '84 SUPER POKE GOLD
Product #: 84-17spg
Size: 17" x 7"

17" 30 Spoke Wire Wheels

Fits Bolt Patterns: 5on4.5, 5.5, 5on4.75
Lug Nut: 5 Lug Unilug

20 & 22" 30 Spoke Wire Wheels

Fits Bolt Patterns: 5on4.5, 5.5, 5on4.75
Lug Nut: 5 Lug Unilug

Wire Wheel Accessories

Finish: Chrome Plated or Gold Plated
Size: Universal



2-BAR CAP



HEXAGON CAP



2-BAR CAP COMBO



2-BAR DRILL TIP CAP

